

# Rampion 2 Wind Farm

## Category 2: Plans

### Open Access Land Plan

**Date: August 2023**

**Revision A**

Document Reference: 2.7

Pursuant to: APFP Regulation 5 (2) (o)

Ecodoc number: 004879199-01



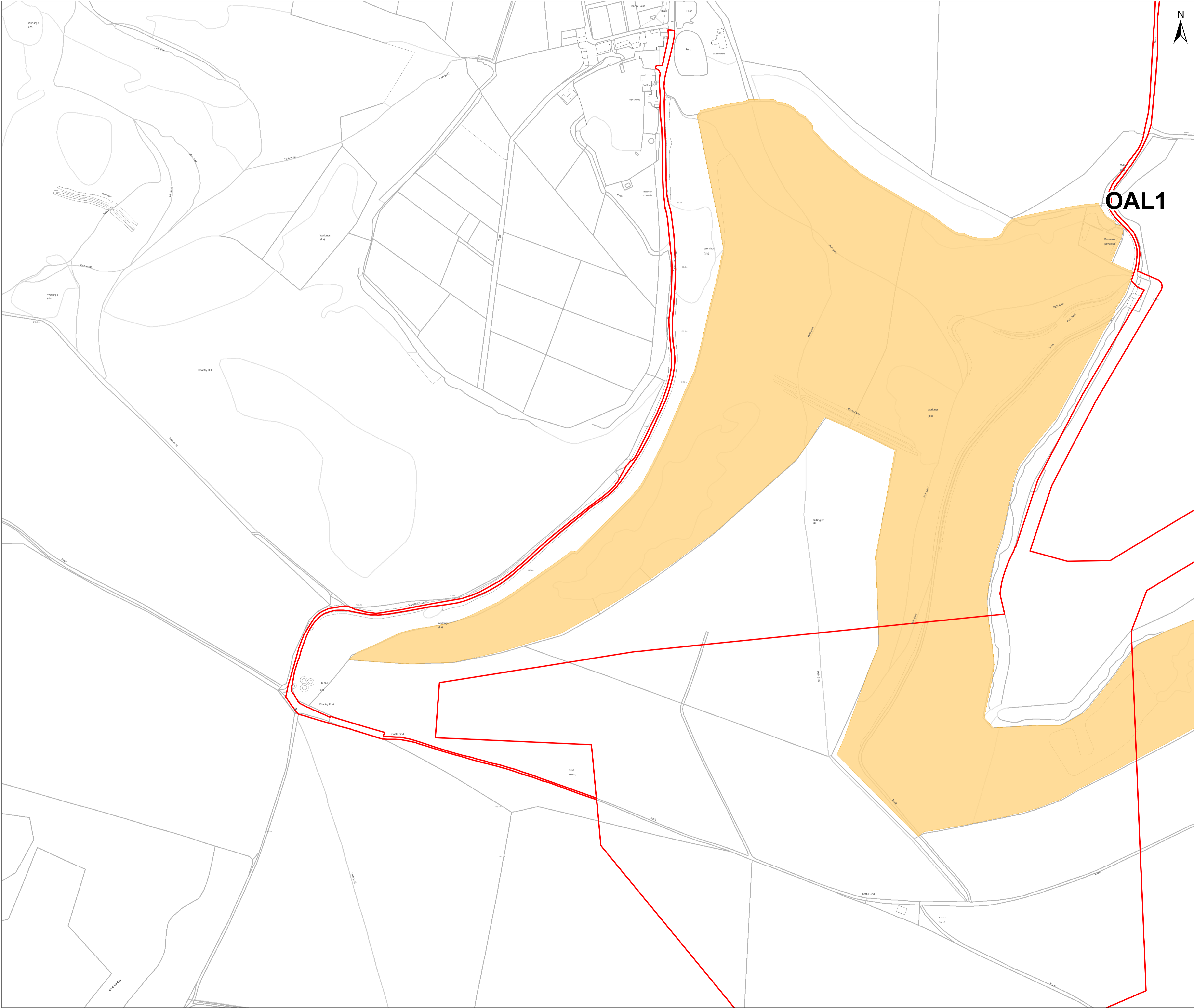
### Document revisions

---

| Revision | Date       | Status/reason for issue   | Author | Checked by | Approved by |
|----------|------------|---------------------------|--------|------------|-------------|
| A        | 04/08/2023 | Final for DCO Application | WSP    | RED        | RED         |

---

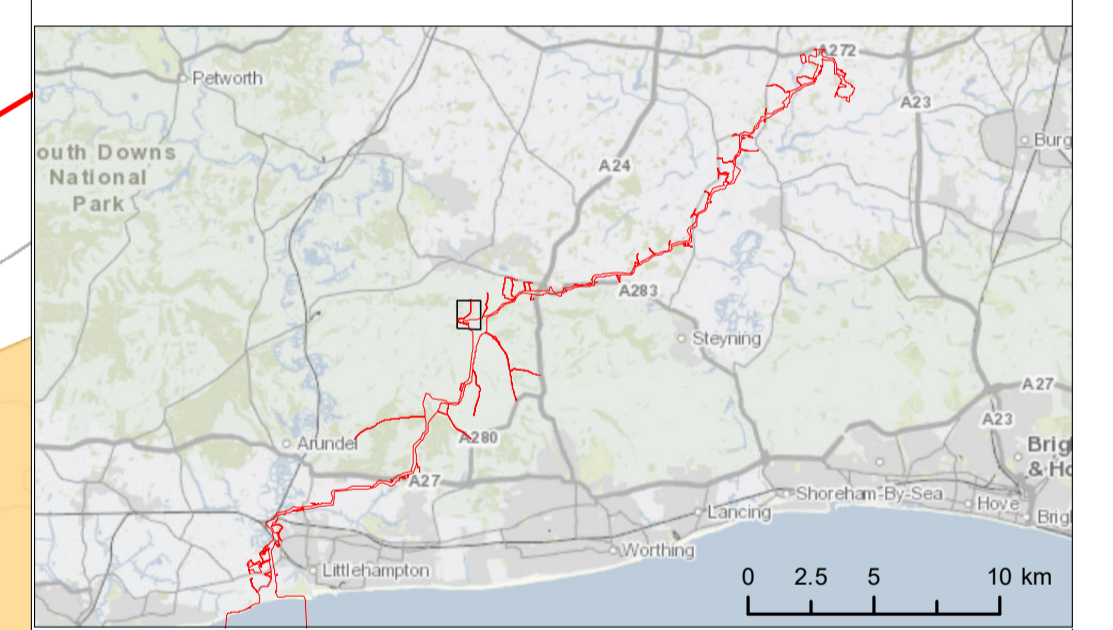
---



**Key**

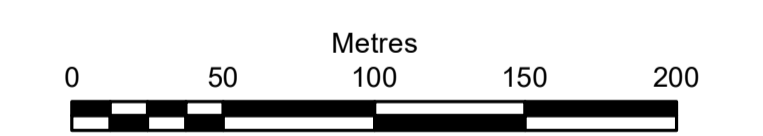
- Development Consent Order Limits
- Open Access Land (OAL)

**OAL1**



Due to scaling, some narrow areas (i.e. existing tracks) within the red line boundary may appear as a single/solid red line on the map.

Scale is 1:2500 when printed at A1 (native page size)



British National Grid Transverse Mercator

Rampion Extension Development Limited



Rampion 2 Offshore Wind Farm  
Open Access Land Plan  
Sheet 1 of 3

APFP Regulation: (5)(2)(o)  
Application Document Reference: 2.7



|   |                 |
|---|-----------------|
| System Identifier:<br>42285-WSPE-ES-ON-FG-OT-4853 | Version:<br>1.0 |
|---|-----------------|

|                 |                    |                     |                           |                  |
|-----------------|--------------------|---------------------|---------------------------|------------------|
| Company:<br>WSP | Drawn By:<br>SHEPS | Chk/Aprvd:<br>SLOWA | Drawn Date:<br>03/08/2023 | Status:<br>FINAL |
|-----------------|--------------------|---------------------|---------------------------|------------------|

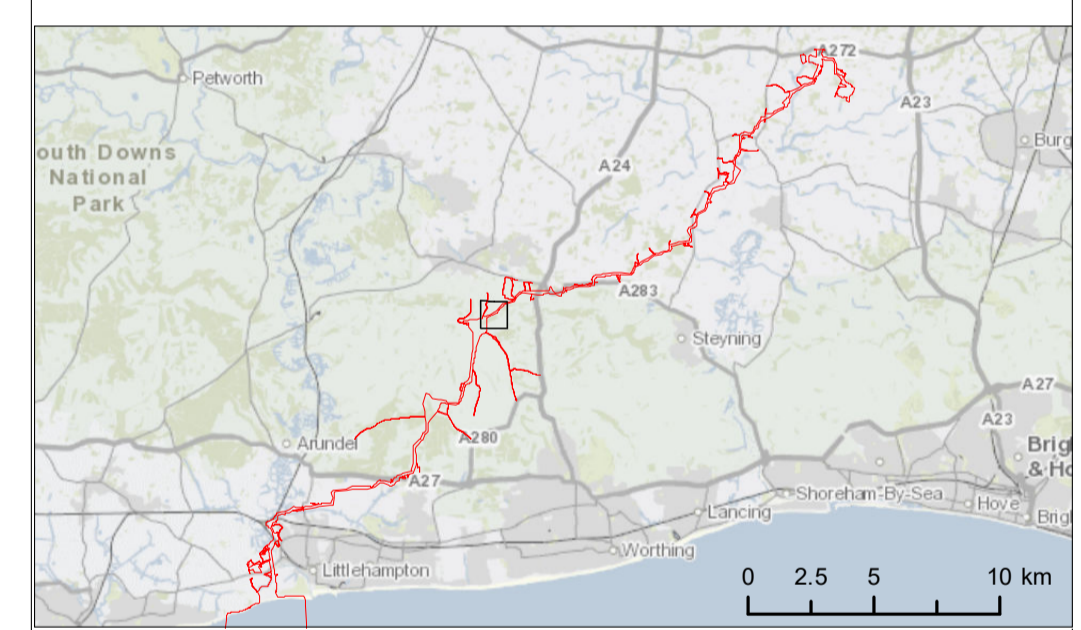
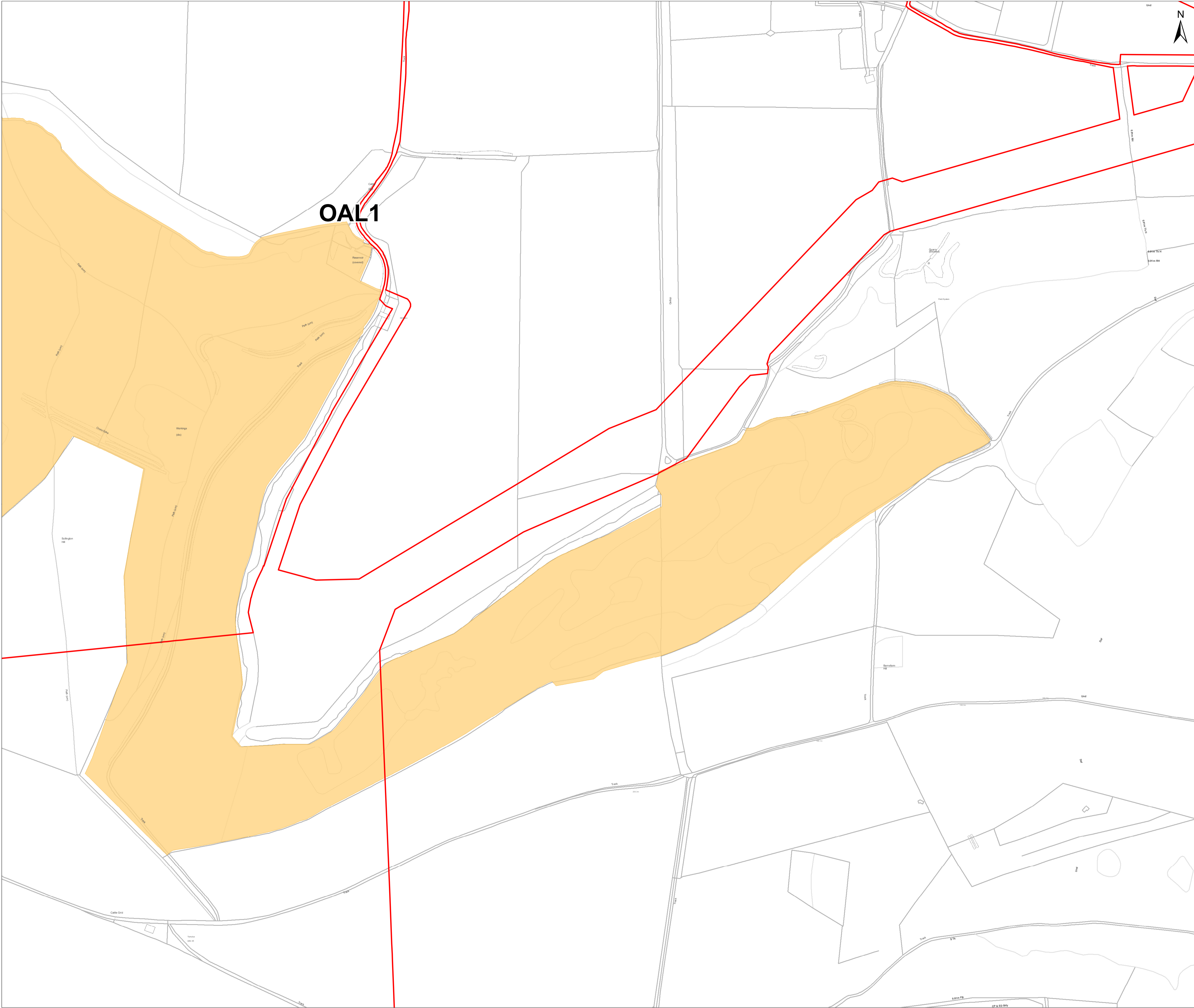




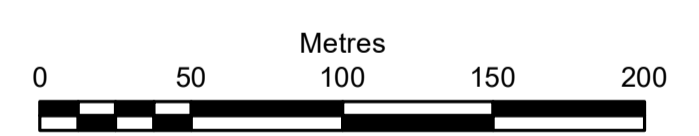
**Key**

-  Development Consent Order Limits
-  Open Access Land (OAL)

**OAL1**



Due to scaling, some narrow areas (i.e. existing tracks) within the red line boundary may appear as a single/solid red line on the map.  
 Scale is 1:2500 when printed at A1 (native page size)



British National Grid Transverse Mercator

Rampion Extension Development Limited



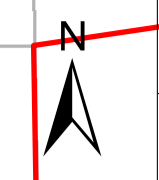
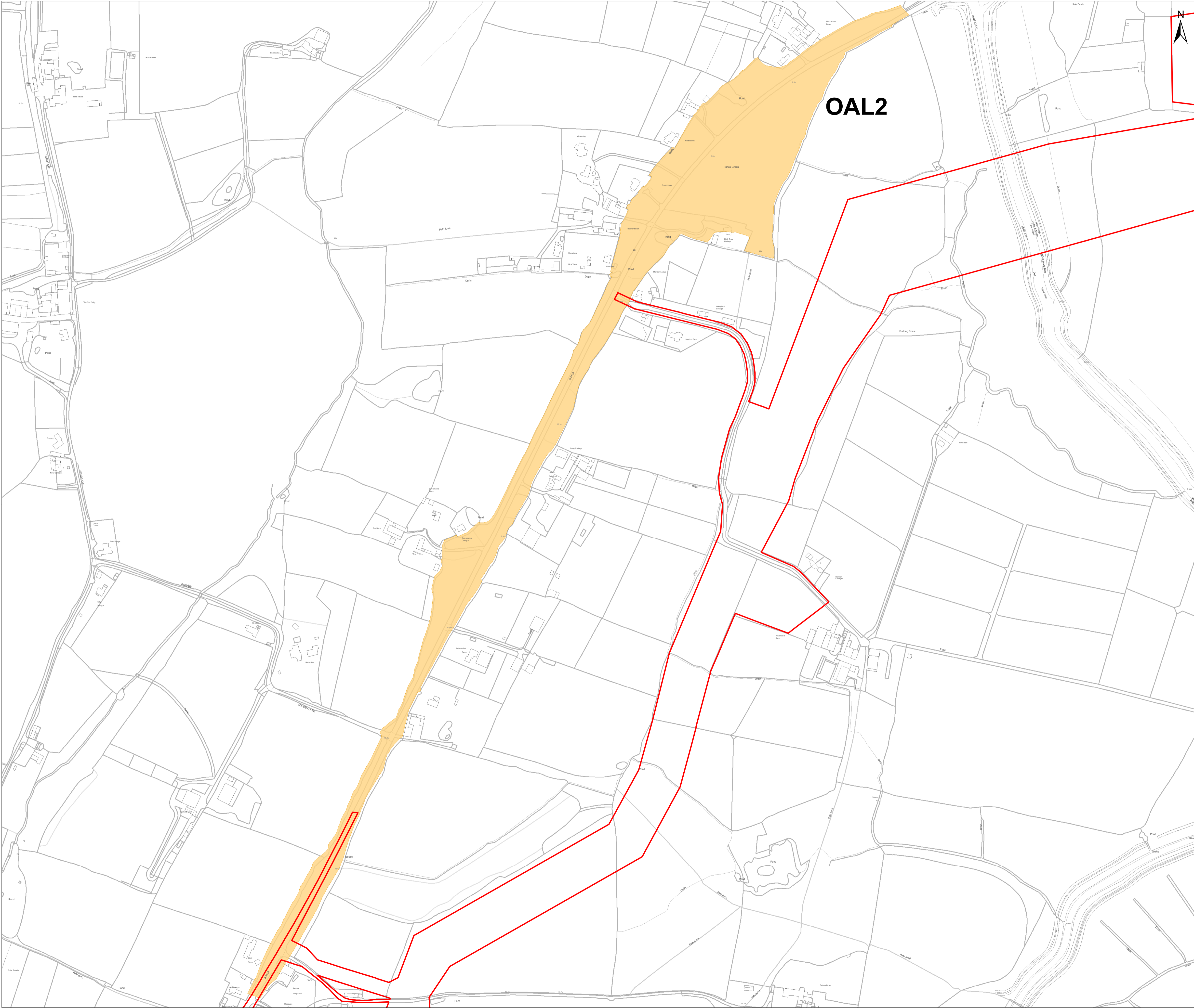
**Rampion 2 Offshore Wind Farm**  
 Open Access Land Plan  
 Sheet 2 of 3

APFP Regulation: (5)(2)(o)  
 Application Document Reference: 2.7

|   |                 |
|---|-----------------|
| System Identifier:<br>42285-WSPE-ES-ON-FG-OT-4853 | Version:<br>1.0 |
|---|-----------------|

|                 |                    |                     |                           |                  |
|-----------------|--------------------|---------------------|---------------------------|------------------|
| Company:<br>WSP | Drawn By:<br>SHEPS | Chk/Aprvd:<br>SLOWA | Drawn Date:<br>03/08/2023 | Status:<br>FINAL |
|-----------------|--------------------|---------------------|---------------------------|------------------|

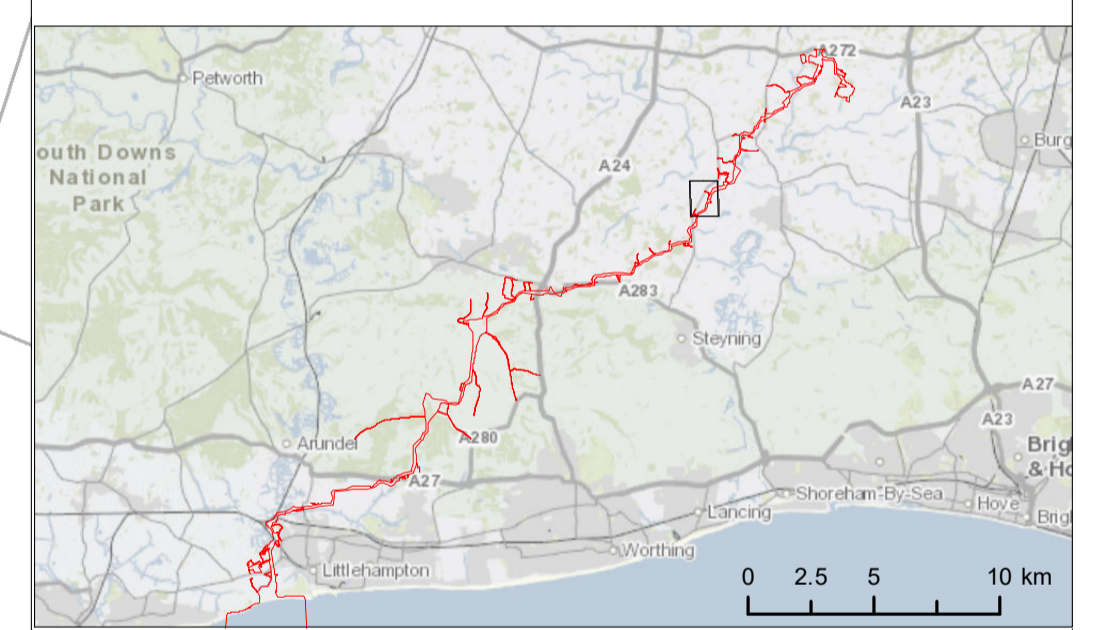




**Key**

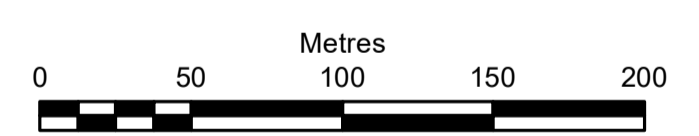
- Development Consent Order Limits
- Open Access Land (OAL)

**OAL2**



Due to scaling, some narrow areas (i.e. existing tracks) within the red line boundary may appear as a single/solid red line on the map.

Scale is 1:2500 when printed at A1 (native page size)



British National Grid Transverse Mercator

Rampion Extension Development Limited



Rampion 2 Offshore Wind Farm  
Open Access Land Plan  
Sheet 3 of 3

APFP Regulation: (5)(2)(o)  
Application Document Reference: 2.7

|   |                 |
|---|-----------------|
| System Identifier:<br>42285-WSPE-ES-ON-FG-OT-4853 | Version:<br>1.0 |
|---|-----------------|

|                 |                    |                     |                           |                  |
|-----------------|--------------------|---------------------|---------------------------|------------------|
| Company:<br>WSP | Drawn By:<br>SHEPS | Chk/Aprvd:<br>SLOWA | Drawn Date:<br>03/08/2023 | Status:<br>FINAL |
|-----------------|--------------------|---------------------|---------------------------|------------------|

Page intentionally blank

Page intentionally blank



